

Drive solutions  
for modern  
façade architecture



*Top actuator technology  
for top façades*

# The specialist for linear actuators



## **elero's wide product range for individual requirements**

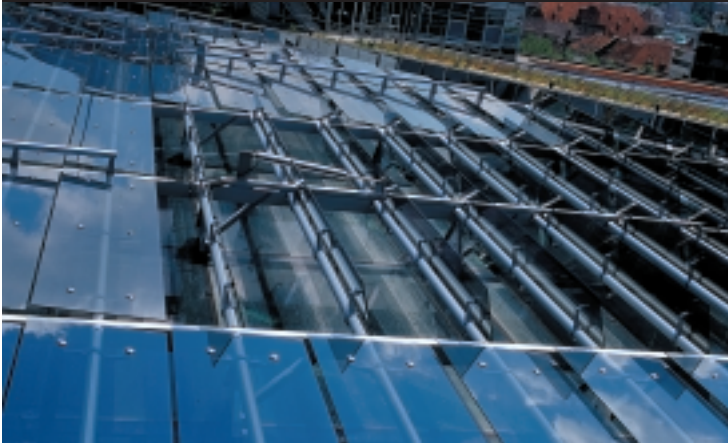
High-quality electric linear actuators are the result of our more than 30 years of experience in motor manufacturing.

This know-how makes it possible for us to develop and manufacture specific actuator solutions for an extremely wide variety of applications.

Electric linear actuators and control systems show their strengths in particular when it comes to creating an optimum combination of installation dimensions, precision, power, speed, robustness and economic efficiency.

However versatile the product range is, all our actuators have one thing in common: they were developed as an answer to the market's needs – especially to individual customer requirements.

# The partner for architects



## **elero actuator solutions – specially designed for demanding architects**

Our office culture is changing: functionality is good – the mix of functionality, comfort and aesthetics is better! This is probably why sun protection systems with adjustable façade slats made of stainless steel or aluminium are more in demand than ever for high-rise buildings.

This trend offers architects new design opportunities if they can fulfil the following requirements when using sun protection systems:

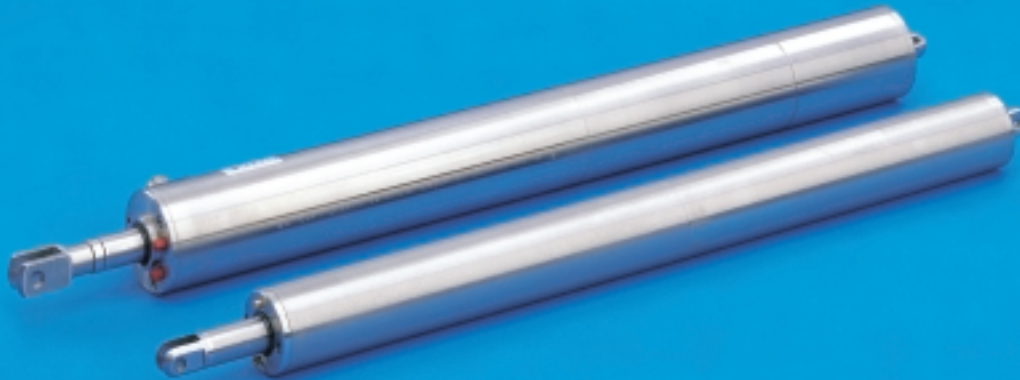
- Protection against solar heat
- Brightening of the room through controlled deflection of daylight
- Glare protection
- Optimisation of viewing conditions for VDU workplaces
- Integration into modern building management systems
- Possibility of using photovoltaic sun protection panels to promote energy efficiency

For all these requirements, elero offers you the right actuator solution. With aesthetically pleasing, weather-resistant stainless steel actuators.



*Your Partner*

# Piccolo and Econom linear actuators



## The stainless steel actuators for slat adjustment on modern high-rise buildings

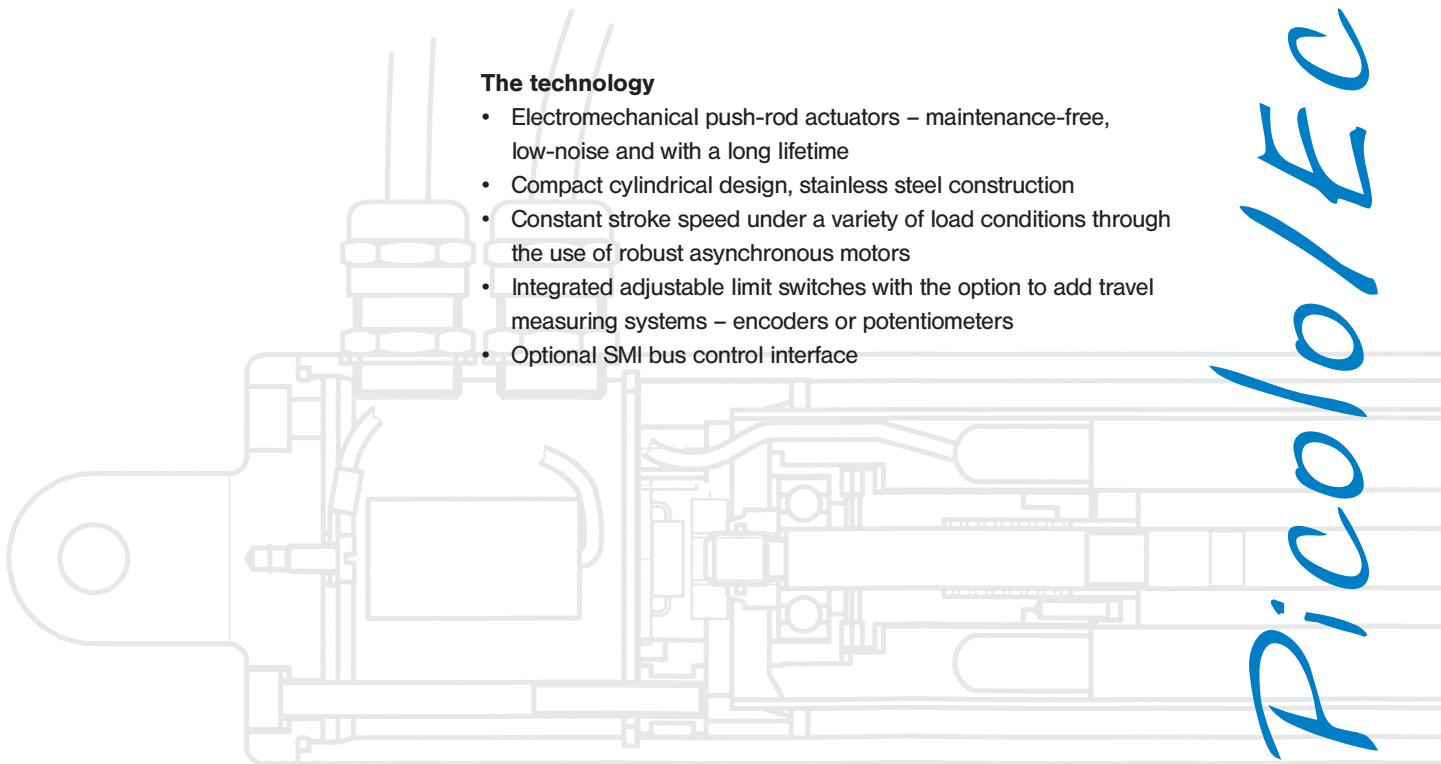
Due to their slim cylindrical construction, the Piccolo and Econom actuators from elero blend inconspicuously into any façade. Slat panels made of aluminium, glass and other high-grade materials can be controlled individually using elero actuators.

## The facts

- Robust weather-resistant stainless steel design
- Efficient actuator technology for use with high static and dynamic loads
- Precise positioning by degrees; ideal, for instance, for sun position tracking
- Integration into modern building management systems such as EIB, LON and other bus systems through SMI interface for bi-directional data transmission
- Suitable for use in **smoke and heat ventilation systems** – TÜV certificate no. 1848/02. TÜV Type tested according to DIN 18232-3

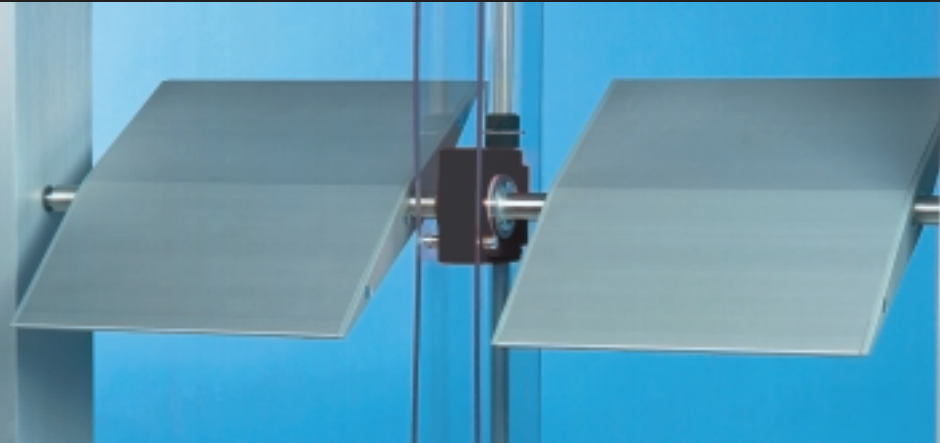
## The technology

- Electromechanical push-rod actuators – maintenance-free, low-noise and with a long lifetime
- Compact cylindrical design, stainless steel construction
- Constant stroke speed under a variety of load conditions through the use of robust asynchronous motors
- Integrated adjustable limit switches with the option to add travel measuring systems – encoders or potentiometers
- Optional SMI bus control interface



Piccolo/Econom

# Limaline slat actuator system



## The slat actuator system for maximum architectural freedom

Limaline from elero makes top drive technology disappear into façade architecture.

Inconspicuously installed in the existing structural profiles, the Limaline system allows for a variety of movement possibilities for slats.

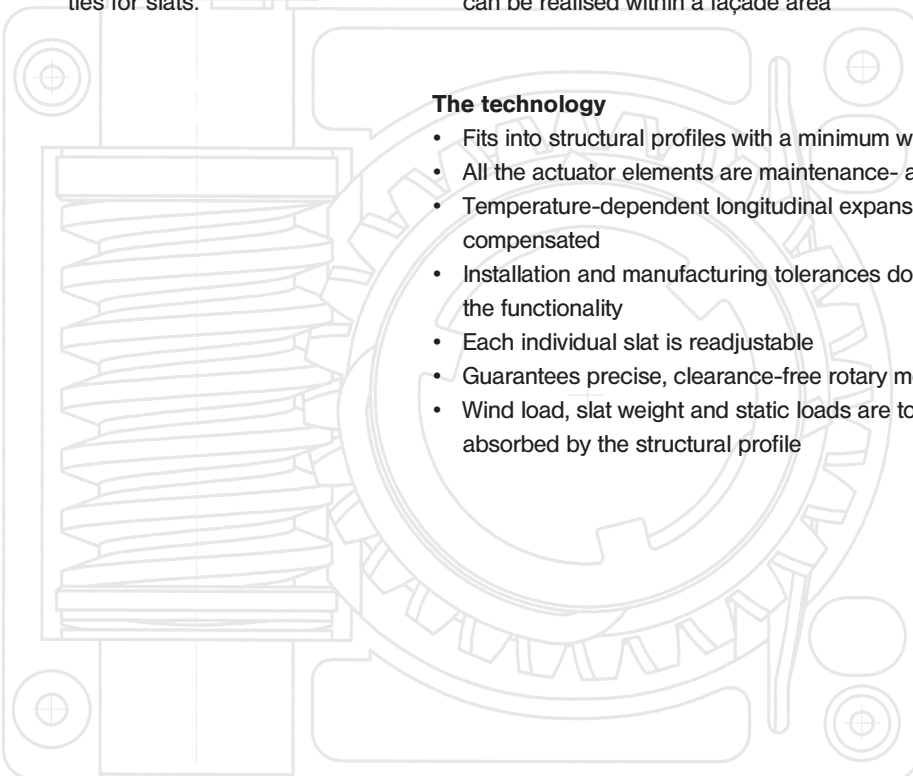
## The facts

- Operation of façade slats made of different materials, e.g. glass, aluminium, stainless steel or photovoltaic elements
- Shading, darkening, light deflection and sun position tracking are possible
- Virtually unlimited control of daylight is possible. Important, for example, for glare-free VDU workplaces and conference rooms
- Rotary movements of 360° offer a variety of façade design possibilities
- Different positions, sizes and axial spacings of individual slats can be realised within a façade area

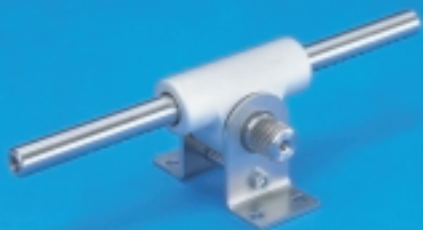
## The technology

- Fits into structural profiles with a minimum width of 50 mm
- All the actuator elements are maintenance- and corrosion-free
- Temperature-dependent longitudinal expansions are compensated
- Installation and manufacturing tolerances do not affect the functionality
- Each individual slat is readjustable
- Guarantees precise, clearance-free rotary movements
- Wind load, slat weight and static loads are to a great extent absorbed by the structural profile

Limaline

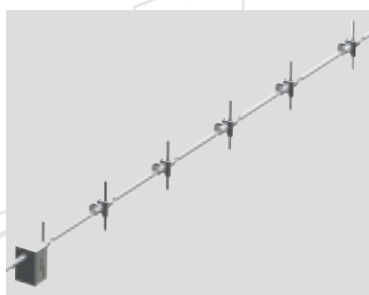


# Vitroline rack actuator system



## The heavy-duty rack actuator system offering the most economical solution for large façade projects

Vitroline from elero is particularly economical in use, with absolutely synchronous operation of movable façade elements. These include louvres, blades and slats in a variety of designs.



## The facts

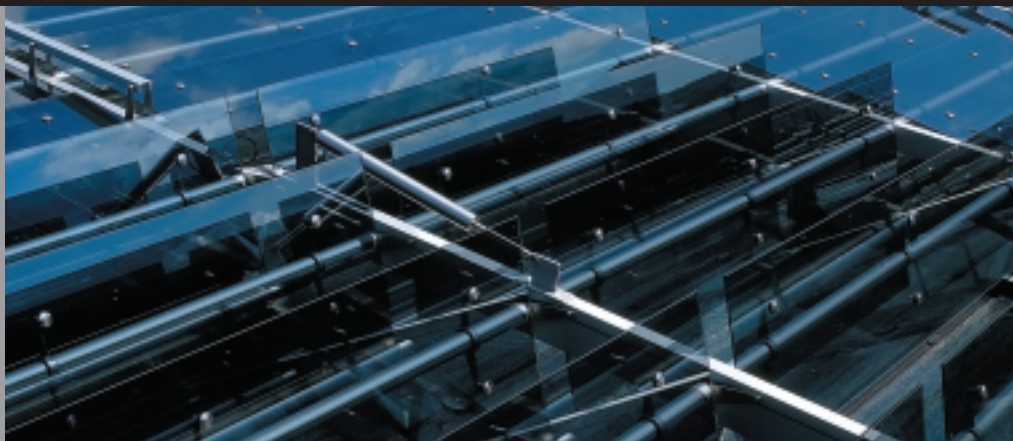
- The actuator system for use with high static and dynamic loads
- Particularly suitable for operation, positioning and securing of large façade areas
- Synchronous movement of façade surfaces through the mechanical coupling
- Individual project-related design of the rack and slat connection and the mounting brackets for the gears

## The technology

- Compact design for perfect integration into the façade
- Low number of electric actuators required for large façade areas. This means low installation costs
- Lubricant-free rack made of stainless steel, aluminium gear housing, either powder coated or anodised
- Up to 20 Vitrolines can be installed in one actuator train
- Can be integrated into modern building management systems

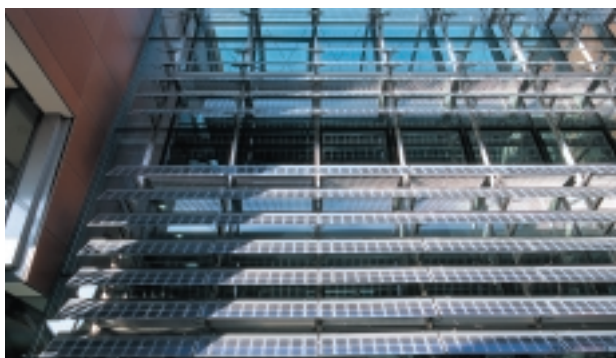
*Vitroline*

# Façades in motion with elero



## Functional and dynamic: examples of elero's reference projects

Whether it be the HUK Coburg, the Nürtingen Regional Savings Bank, the Stuttgart Stock Exchange or many more: we bring movement into the façades of modern high-rise buildings.



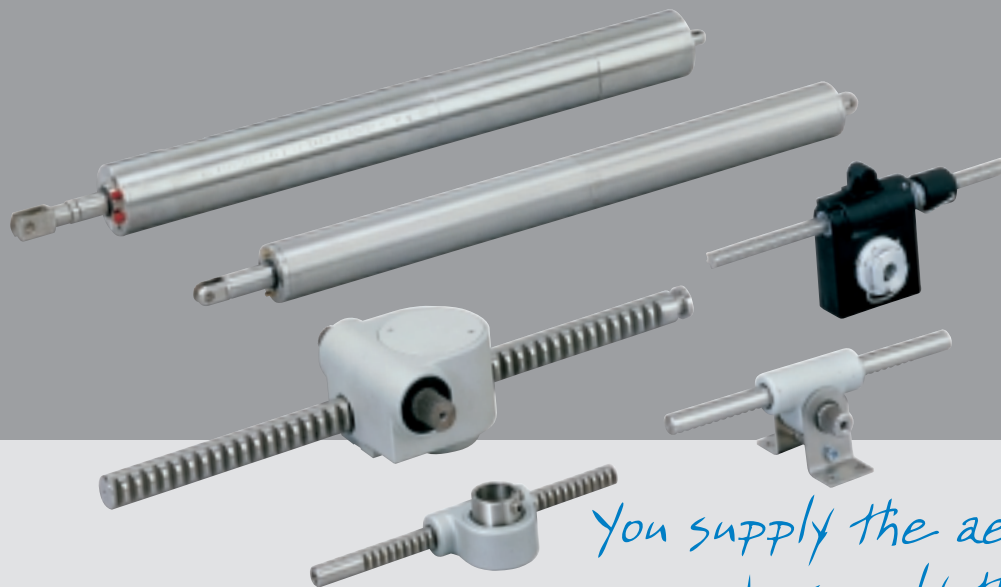
Lots of perfectly satisfied customers – whether it be architects, façade designers or construction companies – are the best proof that elero is the ideal partner for modern façade architecture.

We would be happy to advise you on your next projects: tell us your requirements, and we will fulfil them.



References

# elero – your competent partner for façade solutions



*You supply the aesthetics –  
we supply the technology*

elero is your competent partner for  
movable façade elements.

Extraordinary architecture demands  
extraordinary solutions in terms of actuator  
technology.

Actuator technology should move archi-  
tecture, not change its design. What counts  
is the freedom to be creative – that's what  
makes our actuator systems so exciting.

Let's talk about it.

## **elero GmbH**

### **Linearantriebstechnik**

Nassaeckerstrasse 11

D-07381 Poessneck

Phone +49 (0) 3647 / 46 07-0

Fax Reception +49 (0) 3647 / 46 07-40

Fax Purchasing department -41

Fax Sales department -42

### Head office:

Linsenhofer Str. 59-63

D-72660 Beuren

Phone +49 (0) 70 25 / 13-02

Fax Reception +49 (0) 70 25 / 13-212

[info@elero-linear.de](mailto:info@elero-linear.de)

[www.elero-linear.com](http://www.elero-linear.com)